

TELEVISION STUDIO OPERATIONS

ROBERT A. STORPH
(HEAD, TV STUDIOS)

TELEVISION STUDIO

- A television studio, also called a television production studio, is an installation room in which video productions take place.
- Either for the recording of live television to Solid State Disc (SSD) or for the acquisition of raw footage for post-production.
- The Television Studio consist of;
 - Studio Floor and
 - Production Control Room (PCR).



STUDIO FLOOR

- The studio floor is the actual stage on which the actions to be aired live or recorded take place.
- A studio floor has the following characteristics and installations:
 - Acoustic wall (panels as a noise reduction and reverberation control treatment).



- Boom pole stand



- Microphone (dynamic, lapel and cordless)



- Cyclorama (a cloth stretched tight in an arc around the back of a stage set) Sets and Decoration.



○ Studio Camera



- Stage lighting, pantograph, rigs and the associated controlling equipment.



- Video monitors for visual feedback from the production PCR
- A small intercom system for communication.
- Glass window between PCR and studio floor for direct visual contact is usually desired, but not always possible.
- The on-screen presenters and any guests - the subjects of the television show.



- A floor manager, who has overall charge of the studio area stage management, and who relays timing and other information from the television director.
- One or more camera operators who operate the professional video cameras,
 - though in some instances these can also be operated from the PCR using remotely controlled robotic pan tilt zoom camera (PTZ) heads.



- Possibly a teleprompter, especially if this is live television news broadcast. (Also commonly referred to as an Autocue, is a device that allows a presenter to read a script whilst maintaining direct eye contact with the audience)



PRODUCTION CONTROL ROOM

- The production control room is the place in a television studio in which the composition of the outgoing program takes place or where the activities such as switching from camera to camera are coordinated and recorded.
- A production control room has the following installation of studio equipment
- Camera control unit (CCU) is typically part of a live television broadcast chain, It is responsible for powering the professional camera, handling signals sent over the camera cable to and from the camera, and can be used to control various camera parameters remotely.



CCU



REMOTE CONTROL PANEL



- Vision mixer: A vision mixer (also called video switcher, video mixer or production switcher) is a device used to select between several different video sources and in some cases compositing (mix) video sources together to create special effects



- VTR/ Hyper deck Studio: A recorder that let you record the highest quality uncompressed or compressed DNxHD ("Digital Nonlinear Extensible High Definition") video formats using



- Character generator (CG): A character generator, often abbreviated as CG, is a device or software that produces static or animated text (such as news crawls and credits rolls) for keying into a video stream.
- Modern character generators are computer-based, and can generate graphics as well as text.



- Lighting console: A lighting control console (also called a lighting board, or lighting desk) is an electronic device used to control multiple lights at once.



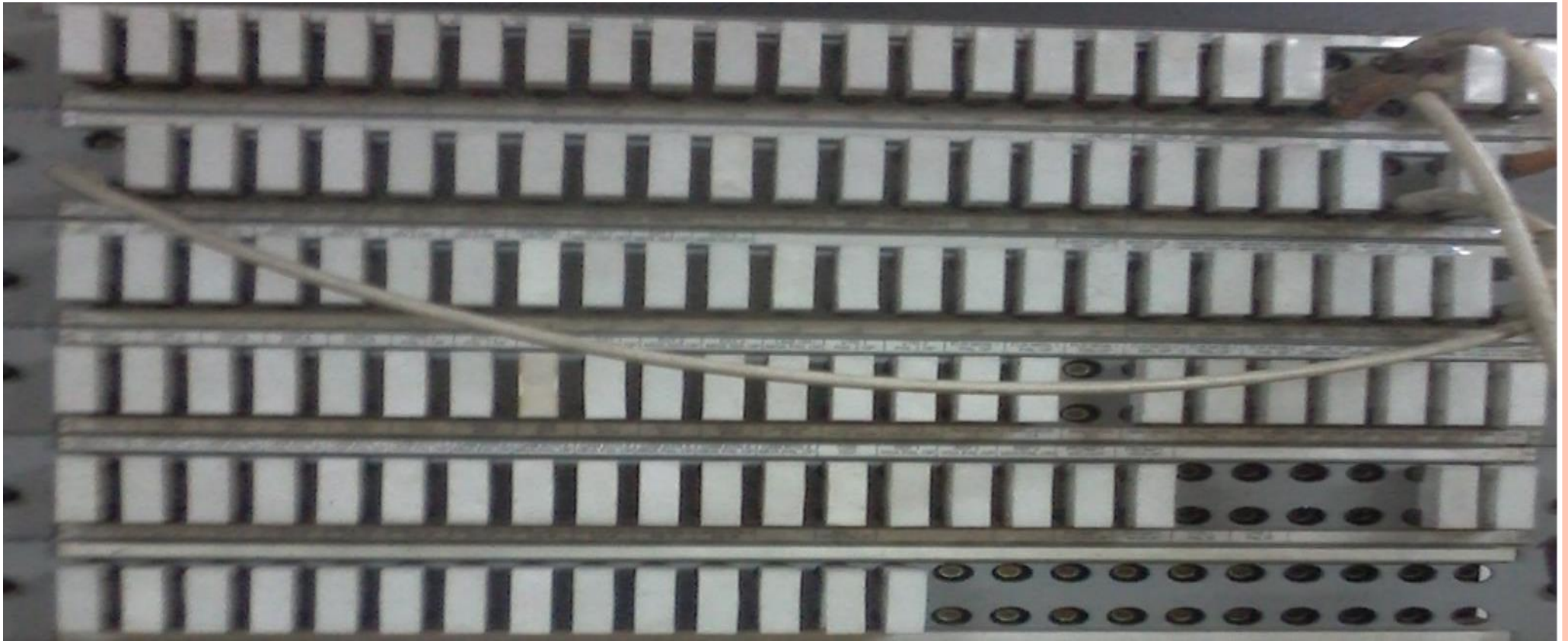


- Audio mixer: A mixing console is an electronic device for combining sounds of many different audio signals.



- Patch panels for audio / video: A patch panel, patch bay, patch field or jack field is a device or unit featuring a number of jacks usually of the same or similar type, for the use of connecting and routing circuits for monitoring, interconnecting, and testing circuits in a





- Broadcast reference monitors (video wave form and vector scope): A vector scope is a special type of oscilloscope used in both audio and video applications.



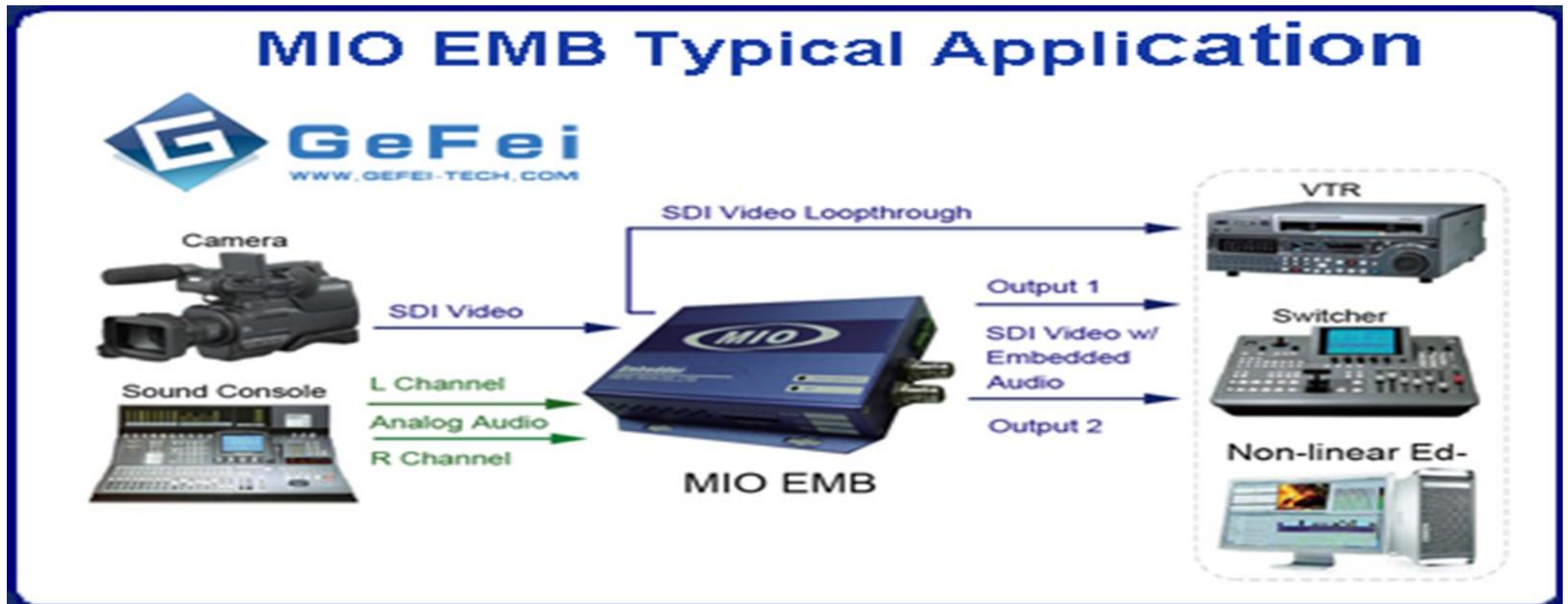
- Whereas an oscilloscope or waveform monitor normally displays a plot of signal vs. time, a vector scope displays an X-Y plot of two signals, which can reveal details about the relationship between these two signals.



- Studio monitors for audio / video: Loud speaker and a display device similar to a television set, used to monitor the output of a video-generating device, such as playout from a video server, Hyperdeck studio, video camera, VCR, or DVD player.
- Rack audio / video.



- Embedder and de-embedder: Embeds and de-embeds audio to/from digital video (HDMI & SDI) signals





- Telephone Hybrid: provide the interface between professional audio mixer and the public telephone network.



The term "studio" usually refers to a place where a particular local program is originated and recorded. If the program is broadcast live, the signal goes from the PCR to MCR and then out to the transmitter.





CCU



TRIAx

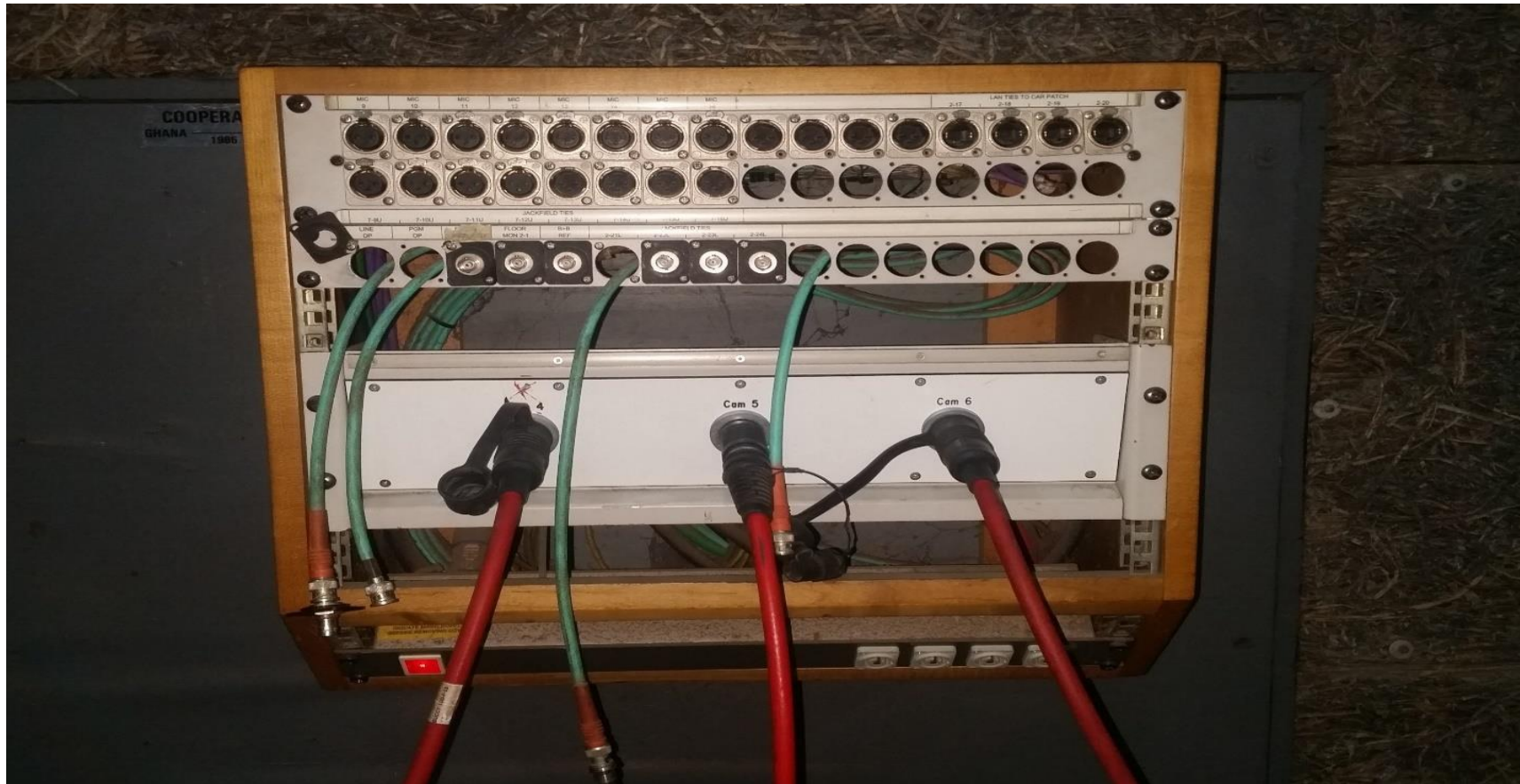




RACKMOUNT VIDEO MONITORS



WALL BOX (AUDIO / VIDEO)



TV studio set-up

